

ecoREsource
conservation preservation properties



The ecoBroker Logo is the symbol of environmentally responsible and sustainable practices in the real estate industry

www.EcoRealEstateSource.com

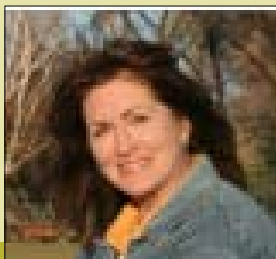
P.O. Box 31, Bozeman, MT 59771

ph 406.587.2950 fax 866.258.5948

Livingston Acreage with Great Mountain Views



Great development potential bordering the city limits. 20 acres for \$149,000 or 40 for \$298,000. Private with good access. Owner will grade and gravel driveway to the lot line. Adjacent 20 acres available for \$225,000. Great development potential as each lot could be redeveloped as a 5 lot minor subdivision.



Watertower Road Acreage 20 acres for \$149,000 or 40 for \$298,000



email: mary@maryackermann.com
mobile: 406.599.9889

Beautiful views all around this parcel just north of town. 2010 taxes approx \$ 377.00, for each tract.





The Yellowstone River is just a few short miles from this lot. Modular and manufactured homes *are* allowed on this parcel. The topography is rolling pastureland with rock outcroppings. Horses are allowed.





This parcel has serious potential for development- close proximity to Livingston, 360 degree views and great build sites. The owner has agreed to grade and gravel a driveway to the lot line so you can get started right away.
20 acres for \$149,000 or 40 acres for \$298,000.

Although the foregoing data has been compiled from sources deemed to be reliable, EcoResource Properties does not guarantee its authenticity. It is intended for informational purposes only, is subject to prior sale, error, revision and cancellation without notice, and should be independently verified with the source of such information.